

Committee:	<b>Corporate Parenting Panel</b>
Date:	<b>21 October 2011</b>
Title of Report:	<b>Redevelopment of Lansdowne Secure Children's Home and reconfiguration at Rose Cottage</b>
By:	<b>Director of Children's Services</b>
Purpose of Report:	<b>To update members of the CPP on the programme for replacement of the current existing 5 bed provision with a new 7 bed facility and the development at Rose Cottage</b>

**Recommendation: The Corporate Parenting Panel is recommended to note the contents of the report.**

## **1. Financial Appraisal**

1.1 The Department for Education (DfE) has formally approved the project for the redevelopment of Lansdowne Secure Unit and has agreed the grant. East Sussex County Council has accepted the funding after negotiation with the DfE to reduce the risks of any clawback by the DfE in the event of future closure.

1.2 The total cost of the project is £8,289,092 which will be completely met by the DfE grant. A significant part of this grant (£540,712) has already been spent in the development of the project to Design Stage H, where an Agreed Maximum Price has been provided by the contractor.

## **2. Supporting Information**

2.1 The Department for Education has continually indicated its support for a new seven bed secure children's home at Lansdowne to replace the existing inadequate five bed provision. Likewise, Ofsted has been in full support of the plan following continuing good inspection reports.

2.2 The programme of works is detailed below:

<b>Activity</b>	<b>Timescale</b>
Mobilisation / Pre-construction	From October 2011
Enabling Works	January to March 2012
Construction	March 2012 to February 2013
Secure unit relocation from existing building to new facility	February to March 2013
Exterior works	March to August 2013

2.3 Planning approval was given on 25<sup>th</sup> August 2011

## **3. Continuity of Service**

3.1 The redevelopment of the site and the programme of works have been designed to allow continuity of care for the young people using the secure home. The existing building will remain in service until the completion of the new building allows a transfer of the young people into the new facility. The project team is working closely with the DfE's architectural advisors and Ofsted to ensure the standards of service are maintained throughout this process.

## **4. Rose Cottage**

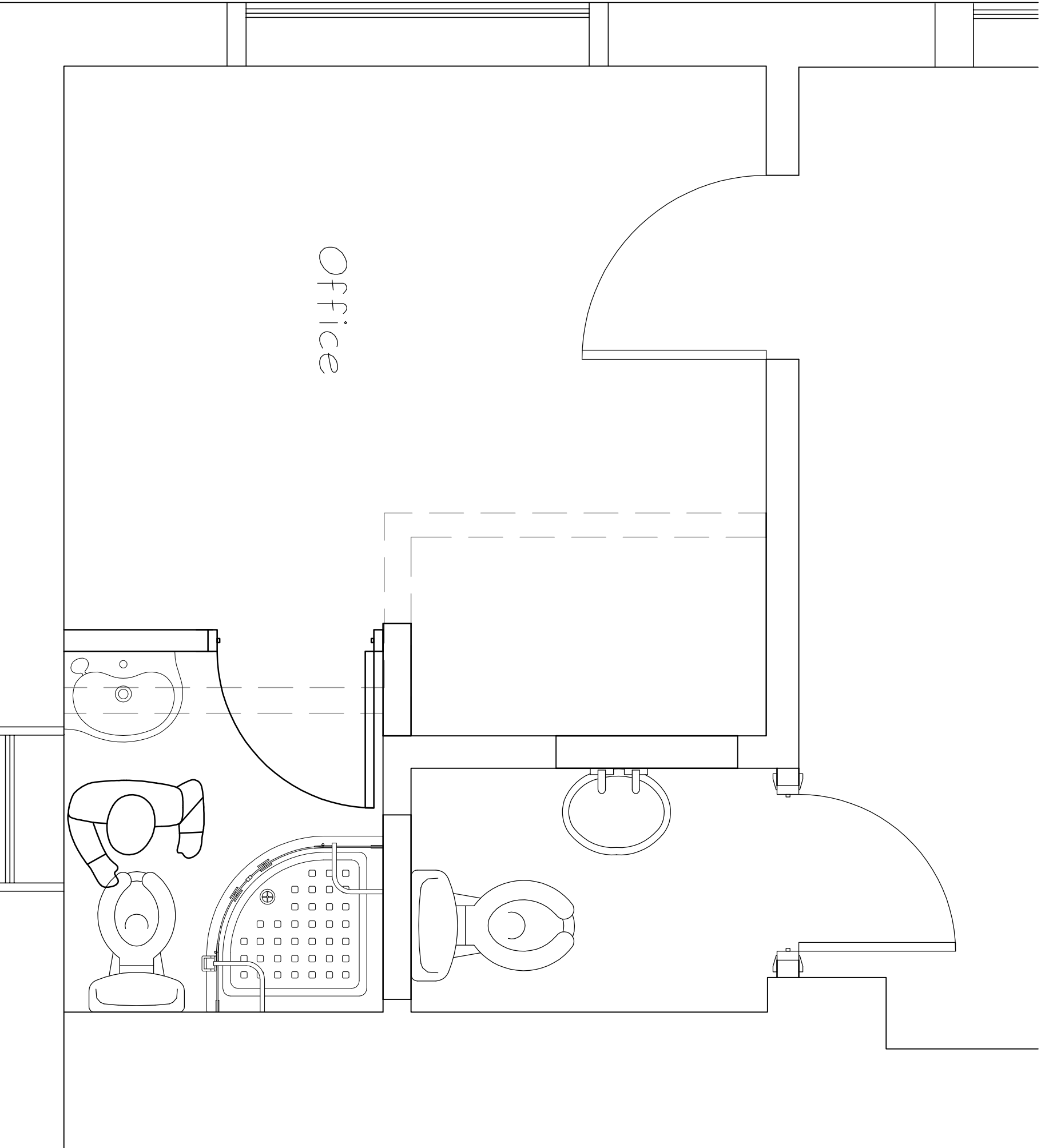
4.1 The internal ground floor layout at Rose Cottage will be reconfigured to provide a larger office space, en-suite shower room and WC, and a separate WC facility. The plan for the project is attached at Appendix 1.

MATT DUNKLEY  
Director of Children's Services

Contact Officers: Teresa Lavelle-Hill Head of Service LAC and Roger Simmons, Children and Families Development Manager

Local Members: Councillor Roger Thomas and Councillor Bill Bentley (Lansdowne Secure Unit)  
Councillor Joy Hughes and Councillor Michael Ensor (Rose Cottage)

BACKGROUND DOCUMENTS: None



**NOTES**

Do not scale this drawing.  
All dimensions to be checked on site prior to commencement or manufacture.

**PRELIMINARY  
ISSUE**

Rev	Date	By	CHK	Comment
A	03/08/11	PS	-	Issued for Client comment

**BRINGING IDEAS TO LIFE**



FRANKHAM

**Frankham Consultancy Group Limited**  
21 Pergemount Road  
Haywards Heath RH16 3TP  
01444 444900 / 01444 455842  
enquiries@frankham.com  
www.frankham.com

**Client**  
East Sussex County Council

**Project Title**  
Rose Cottages  
7 Terminus Way  
Bexhill-On-Sea  
East Sussex, TN39 3LS

**Drawing Title**  
Proposed Ground Floor Plan (part)

**Drawn by:** PS      **Scale:** 1:20 @A3      **Date:** 19/07/2011

**Designed by:** BT      **Checked by:** BT      **Approved by:** AR

**File Ref.:**

<b>Drawing No.</b> 521375-B-103	<b>Rev.</b> A
------------------------------------	------------------